

Features documentation

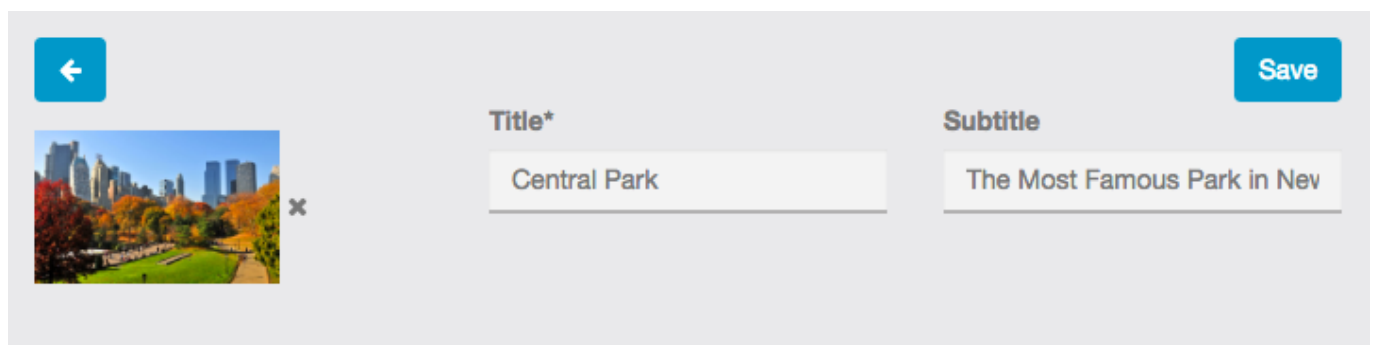
Places

With this feature, you will be able to create a list of geolocated places.

It will display all the places on a map, or, if the user opens the sheet of a particular location, he will be able to get the path and directions to this location, by walking or driving. The listing of the locations is sort according to the distance between the locations and the user, from closest to farthest.

After having added the feature to your app, click on the “+” to add a place to the list.

You can add an image that will be displayed in the list for this location, a title, and a subtitle:



The screenshot shows a form for adding a new place. On the left, there is a blue square button with a white left-pointing arrow. To its right is a placeholder image of Central Park with a small 'x' icon in the bottom right corner. Further right are two input fields: the first is labeled 'Title*' and contains the text 'Central Park'; the second is labeled 'Subtitle' and contains the text 'The Most Famous Park in Nev'. On the far right, there is a blue square button with the text 'Save' in white.

Then, you have to enter an address for this location, or its coordinates. You can add a label for this address but it's not mandatory.

If you check the “Display address” checkbox, the address will be shown in the sheet of the location. If you check the “display location button” checkbox, it will display the button that will allow the user to see the path to this location.

Features documentation

Add sections:

Text **Image** **Video** **Button** **Attachment** **Slider** **Cover**

+

Label:*

Address:

Latitude:

Longitude:

Display address

Display location button

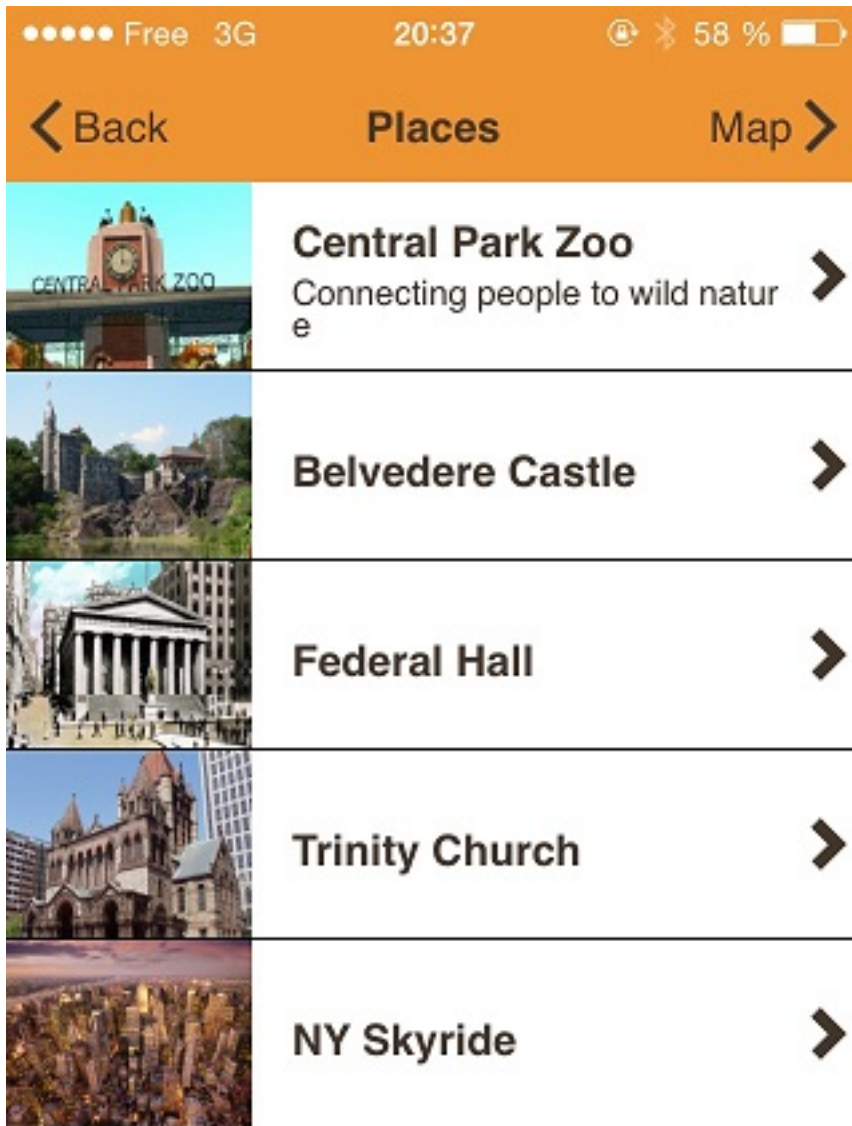
Save

Then you can add other sections like text + image, photo gallery, videos, cover. These sections are the same than in the Custom page feature, thus you can take a look to our support article about the Custom page feature to see how it work, [click here](#). You can also add touch to call buttons, or web links buttons.

Once you have set up the list, it could look like that:

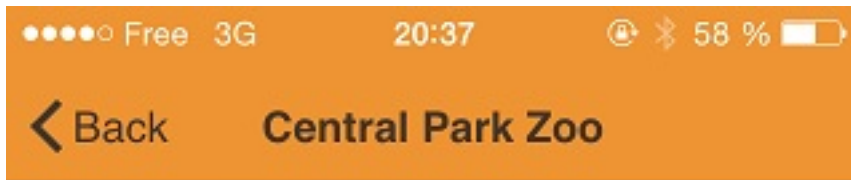
The list:

Features documentation



The location sheet:

Features documentation

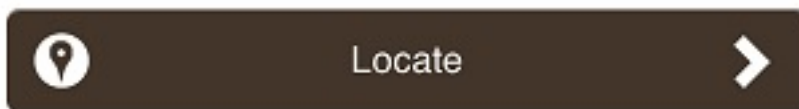


Central Park Zoo

Connecting people to wild nature



Snow Leopard Cubs at Central Park Zoo



Central Park's new, state-of-the-art Zoo was built when the [Wildlife Conservation Society](#) took over the management in 1984. It showcases animals from tropical, temperate, and polar zones around the world. Restrooms are available with admission fee.

A favorite with many visitors is the sea lion pool

You can also add a search tab in the feature. You can search your different points of interest based on four types of search:

Features documentation

SEARCH

Enable search filters:

Text	<input checked="" type="checkbox"/>	Search
Type	<input checked="" type="checkbox"/>	Type
Address	<input type="checkbox"/>	Label
Around you	<input checked="" type="checkbox"/>	Near me 30

Save


Just check the search filters which should be displayed in your app.

- “Text” allows you to make a classic search by text (for example, you can search for a “park”)
- “Type” allows you to search by tags
- “Address” allows you to search by address
- “Around you” allows you to only display places situated in the radius you set up

For the “Type” search, you have to add tags to your points of interest which will be displayed when you search by “Type”:

Features documentation

FEATURE SETTINGS



Page name: **Activated** **Social Sharing**

ADD

Title * **Subtitle**

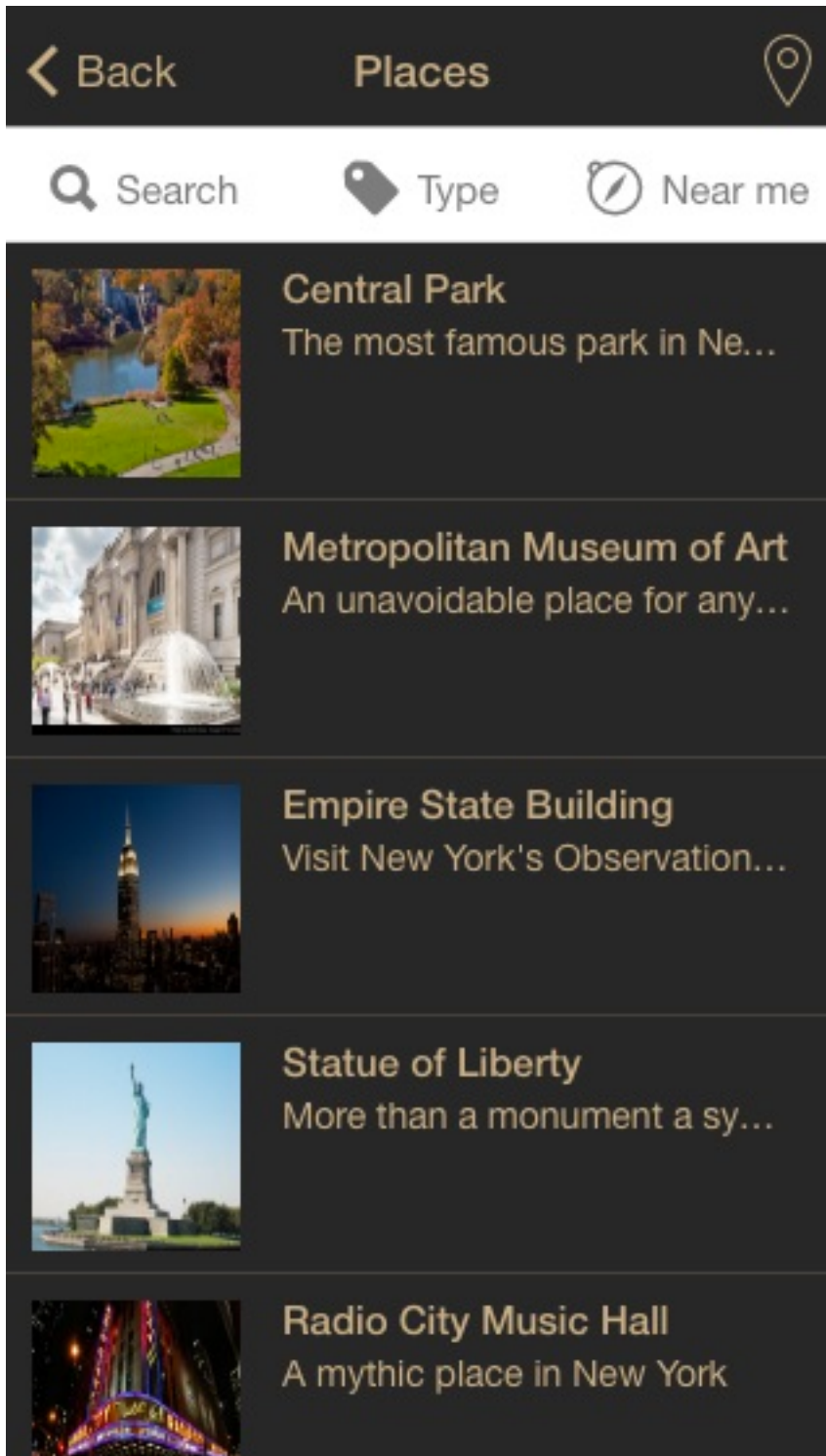
Display image in page **Display title and subtitle in page**

Type

| Tags separated by commas

Finally, here is the result inside the app:

Features documentation



Unique solution ID: #1001
Author: support
Last update: 2018-11-05 10:36